



Convergence of Retirement Information Systems



Application mapping and implementation of a process repository in the retirement funds sector

+ “A service-oriented-architecture simplifies application maintenance and allows for a high level of reactivity to changes in regulations.”

The GIE Cent (Economic Interest Group) is responsible for one brick in the “Usine Retraite” project designed to converge the retirement management systems. The EIG has used MEGA’s solutions to urbanize the information system, model the processes and create a process repository.

Over the past few years, we have observed a large-scale movement to federate social welfare groups and converge retirement information systems, whereby the objective is to simplify the monitoring and payment of retirement benefits. The “Usine Retraite” project is part of this movement. This project is designed to create a single, shared administrative management application for these various systems. The organizations participating in the project have formed different Economic Interest Groups (EIGs), each of which responsible for developing one or more components or “bricks” of the future software.

The overall architecture of the future unified system is based on a service-oriented architecture divided into consistent functional units, reusing the services offered by the different EIGs and their interoperability. In addition, this architecture simplifies application maintenance and allows for a high level of reactivity to changes in regulations.

The GIE Cent is responsible for the DN (Personal Declaration) brick of the “Usine Retraite”. Paired with other groups, it should lead to the creation of the Retirement Computing EIG during 2007. The purpose of the GIE Cent - and of the future Retirement Computing EIG - is to pool the IT management of the retirement back-office between the AGIRC-ARRCO supplementary retirement institutions. The goal of the new system is to optimize the resources implemented for supplementary pensions, and as a result, the overall economic efficiency of the Groups. Today, this platform serving the Social Welfare Groups manages 247,000 companies, handles nearly three million subscribers and more than 1.6 million welfare recipients.

Development project for the DN brick

The “DN Brick” project really started at the end of 2005 with a requirements identification phase. At the same time, the GIE Cent conducted a study on the implementation of a structure and chose MEGA to support the process of modeling the DN brick IT application.



+ “This division into business processes provides a customer-oriented view, which is essential for encouraging internal communication and allowing the system to evolve.”

The project started with the launch of a pilot study at the beginning of 2006 designed to validate the diagrams and create a methodological guide for the process.

In February 2006, the specification phase began, using a top-down approach, starting with the functional urbanization plan, corresponding to the highest level, involving the “neighborhood” concept (first-level urbanization zone), business processes and sub-processes, and ending with the unit services. This division into business processes provides a customer-oriented view, which is essential for encouraging internal communication and allowing the system to evolve.

A process is described through its implementation diagram, representing how the process occurs through a sequence of procedures performed by structure-type internal players. The process for each procedure is represented by a flowchart (total of 15 flowcharts). The flowchart describes the sequence of operations initiated following the receipt of one or more messages and performed by players according to their positions (profile or information systems).

A single repository

For this urbanization and process modeling approach, the GIE Cent chose the MEGA Architecture, MEGA Designer and MEGA Process products. *“The tool is key for modeling processes and identifying services. The data, models and services are linked in a shared published services repository,”* explains Yves Corriou, Usine Retraite service manager for the GIE Cent Research department. *“MEGA’s logic model remains the single repository.”*

The various steps of the process are characterized by the production of pre-defined deliverables, which are created through the development of diagrams and entering of characteristics and comments associated with the objects in the diagrams. MEGA can be used to automatically generate a Word or HTML (Intranet) document containing these elements.

Available within the MEGA repository, the diagrams provide a means of communication between project management and the project owner: project management represents the needs expressed by the project owner in the form of a map. Yves Corriou highlights the

MEGA SOLUTIONS

A pioneer in the field of modeling, MEGA is the architect for companies organizing their management around mechanisms of value creation.

Based on a business process and enterprise architecture approach, MEGA solutions provide an efficient way to achieve Business Process Analysis and Performance and IT Architecture and Governance; this is done by giving the organizations the means to control their human and IT resources and increase their ability to drive change.

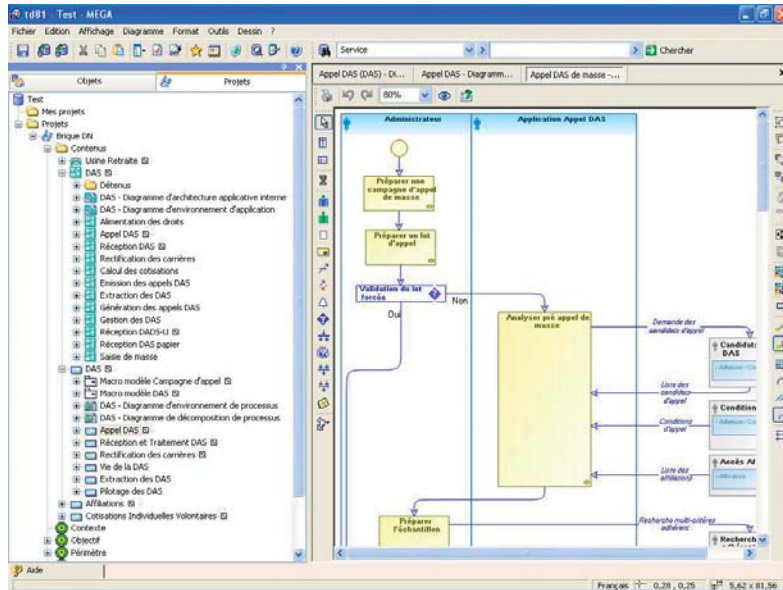
With the help of MEGA consultants’ astute expertise and thanks to MEGA products, organizations can implement an Enterprise Business & IT Repository to gather processes and IT systems descriptions in a consistent way.

The robustness and flexibility of the MEGA repository and its automatic document generation mechanisms (Word, Office, intranet sites etc.) effectively supports the description and optimization of organizations and information systems, such as the initiatives to make companies comply with regulations and regulatory constraints.



+ “The data, models and services are linked in a shared published services repository,” explains Yves Corriou, Usine Retraite service manager for the GIE Cent Research department.

benefits of the MEGA tool for communications: *“It is an unequivocal common language for sharing information; a guarantee of mutual trust and compliance with the agreements undertaken; shared information, strengthened relationships, high reactivity generated through smooth exchanges; and support for the validation process.”*



MEGA, the keystone of the unified system

As part of the process of implementing the Usine Retraite, domain by domain, the application elements (data structure and programs) of the current multiple-scheme retirement system will be replaced by the corresponding bricks of the Usine Retraite. Integration includes modeling the current system’s application architecture, dividing it into functional domains and determining the positions affected by the new Usine Retraite urbanization.

The MEGA repository lies at the heart of this transformation. After the cross-references that have been imported into the repository, impact studies can be conducted by queries. The MEGA tool will also be used to model the new target architecture scheduled for late 2008.

GIE Cent

The GIE Cent – to be renamed GIE Informatique Retraite – is a computing Economic Interest Group for the AGIRC-ARRCO supplementary retirement institutions. The GIE Cent is committed to the member institutions to guarantee the control and the quality of the services related to the running and the maintenance of the software used for the activity management related to the retirement.

The GIE Cent is a publishing and non-commercial company allowing the members supplementary retirement institutions to increase their means and resources, decrease their charges and develop a consistent, more complete and attractive offering.